



Defense Systems

Dot4 has completed a wide range of defense application projects for the Navy, Army, and Air Force as a prime contractor or subcontractor.

The projects completed by Dot4 include work on weapon systems, communication systems, and simulation systems. Dot4 has completed flight simulation projects for the A-10, B-2, AH-64, and F-14 aircraft.

Telecommunications

Dot4's expertise in embedded and realtime technologies was employed by clients in the telecommunication sector for the development of network data switches, network routers, network protocol development, and leading edge network simulation projects.

Dot4 contributions are found in wireless products, video conferencing products, and audio conference bridging products.

Financial Information Services

Industry leaders in the Financial Services market such as Reuters, InterCapital, and ABN have made Dot4 an important branch of their engineering teams.

Dot4's expertise has been valued for the processing of realtime data and the rehosting of important applications to modern platforms, from the trading desk to back office servers and networking components.

Vendor Support

Dot4 is the "secret weapon" used by a number of leading vendors in the real-time industry to solve tough OS kernel problems, undertake difficult platform rehost projects, and implement custom requirements from customers.

Dot4 has earned a reputation for building teams that are deeply knowledgeable in the client's products and technologies, and able to work seamlessly with the client's in-house staff to deliver projects on-time.

Dot4, Inc.

Massachusetts office:
319 Littleton Road, Suite 304
Westford, MA 01886
800.834.1951
978.392.8861 (fax)

New York office:
6080 Jericho Turnpike, Suite 211
Commack, NY 11725
631.493.0740
631.493.0797 (fax)

sales@dot4.com
www.dot4.com



Experienced Professionals

Dot4 engineers understand the need to think creatively and draw upon their expertise and experience to solve the "tough" problems.

Real-Time Expertise

At Dot4, real-time is our sole focus. We have experience in multiple real-time software environments, hardware platforms, and industries.

DOT4 AT A GLANCE

Market Sectors

- Defense Industry
- Financial Services
- Vendor Support
- Telecommunications
- Real-Time Systems

Partnership Approach

Dot4 clients get the services of professional real-time engineers and the knowledge, expertise, and support of the entire company.

Complete Project Support

Analysis, design, software development, testing, performance tuning, and integration are all Dot4 deliverables.

Dot4 is a software development and engineering services firm that focuses on systems, software and applications that require real-time, deterministic performance.

Focus on Real-time

In the early 1990's, real-time technology was changing rapidly as older proprietary systems were being swapped out for more robust UNIX systems with real-time extensions, single-board computers, and embedded real-time operating systems. The transition for many companies represented a shift to lower-lifecycle cost solutions but required very complicated re-engineering efforts for applications.

As software teams wrestled with the technology revolution, three real-time software engineers created Dot4 in 1993 to address those needs. Dot4 started out by providing expert engineering services to help companies through this transition period. Dot4's founding members established the following corporate mission: *To be a leading supplier of real-time and embedded software engineering and consulting services.*

Growing Strong

In the years that followed, Dot4 completed hundreds of software engineering projects for clients in both the commercial and defense sectors. Projects have included flight simulation; radar, avionics, weapons, and missile systems communications and networking; measurement and control systems; telecommunications; and financial/brokerage information systems. Engineering services projects covered the full life cycle of the software development process – from analysis and design to development, test, integration, and implementation.

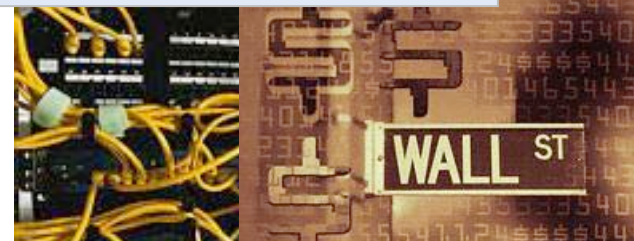
Real-Time Applications

- Flight Simulation
- Radar, Avionics, Weapons and Missile Systems
- Communications and Networking
- Measurement and Control Systems
- Financial Information/Brokerage Systems



Operating Systems – Kernel – Middleware

- Device drivers, BSPs
- New/Custom APIs
- UNIX and Linux kernel modifications and new features – SVR4.X, Mach, Solaris, etc.
- RTOS kernel modifications and new features for VxWorks, LynxOS, embedded Linux, POSIX kernel and application compliance



Networking – Communications

- Network Protocols and Interfaces – TCP, UDP, ATIV Frame Relay, SONET, STREAMS
- Routing and Switching – OSPF, MPLS, PVS, SVC, LMI, DS-x, OC-x, HSSI
- Network Simulation



System Rehosts and Upgrades

- Rehosting proprietary systems and Windows systems to UNIX systems and embedded platforms.
- Rehosting UNIX systems to embedded platforms.
- Upgrading software to support new processors, buses, devices, interfaces.
- Performance tuning to optimize throughput, response times, and determinism.
- Problem resolution, analysis, design, development, test, and integration.

Today, Dot4 remains true to its original real-time focus. We continue to provide real-time software engineering services and consulting. At the

New Design and Development

- Analysis, design, development, test and integration
- Simple single board solutions through complex multi-platform systems
- Complete systems, modules and modifications
- Solutions consider technical, functional, performance and environmental requirements

same time, we are evolving and expanding our technology expertise, completing projects using Linux, Win NT, XP, and CE.

Experienced and Professional

At Dot4, the quality of the services delivered is directly dependent on the experience and capabilities of our engineers. Dot4's engineering staff has an average of 15 years of professional experience. Each engineer is knowledgeable in multiple real-time technologies, has prior experience in one or more real-time industries, and most importantly, has a systems-level understanding of real-time technology.

Our engineers know that each project has business and technical challenges. They understand how the software and hardware components work in concert to produce real-time performance. They are capable of accomplishing tough missions involving firmware, operating system kernels, and application that spans the realtime and embedded marketplace.

Dot4 is adept at responding to real life situations of shifting business and technology priorities throughout a project. We have adopted the Agile Programming engineering discipline enabling us to deliver the most value in the least amount of time.